



ދިވެހިރާއްޖޭގެ ސަރުކާރުގެ ގެޒެޓް

## Maldives Meteorological Service

### Rainfall and Temperature Outlook over Maldives

For August 2020

#### Summary

Rainfall likely 10% increase over the country during August 2020. Temperature likely above normal during August 2020.

#### Introduction

This consensus outlook for Maldives has been developed through assessments including prevailing regional and global climate condition and prediction of various models, seasonal forecast of WMO Lead Centre for Long-Range Forecast Multi-Model Ensemble (LC-LRFMME), NMME Probability Forecasts of Monthly Climate Anomalies and calibrating climate models.

**El Niño -Southern Oscillation (ENSO):** ENSO-neutral condition prevails with Equatorial Sea Surface Temperatures (SSTs) near to below average across east-central and eastern Pacific Ocean. Models indicate La Niña condition.

**Indian Ocean Dipole (IOD):** Neutral IOD condition is likely to continue throughout August.

**Madden-Julian Oscillation (MJO):** Currently weak MJO signal over Maritime Continent. The signal is likely to be enhanced during 1<sup>st</sup> week of August and gradually weak in the 2<sup>nd</sup> week within the same phase. There is possibility of the signal in the Indian Ocean towards end of the month.

#### Calibration of climate models

Calibration of some GCM output with station observed rainfall data suggests above normal rainfall in southern atolls and normal to above normal in central and northern atolls.

#### Global Producing Centres and Lead Centre



[www.meteorology.gov.mv](http://www.meteorology.gov.mv)



[info@met.gov.mv](mailto:info@met.gov.mv)



+960 3323084



+960 3320021 / 3341797

22000 ، ދުވަސް  
ދިވެހިރާއްޖޭގެ ސަރުކާރުގެ ގެޒެޓް



Hulhule<sup>\*</sup>, 22000  
Republic of Maldives



@MetMaldives



#MetMaldives



ދިވެހިރާއްޖޭގެ ސަރުކާރުގެ ގެޒެޓް



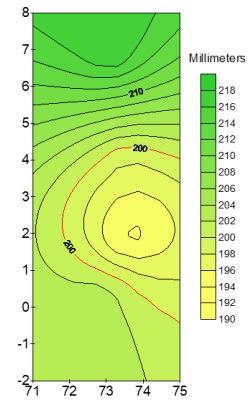
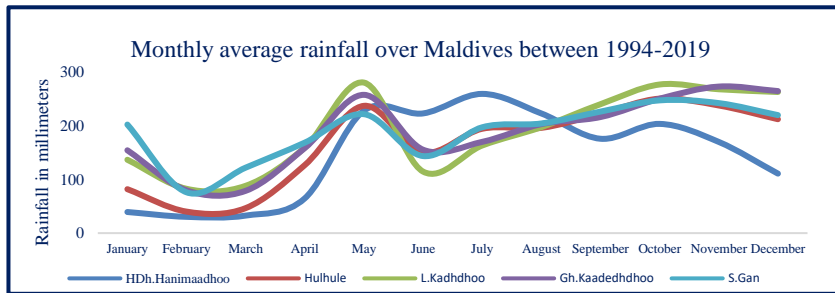
Probabilistic Multi-Model Ensemble of WMO Lead Centre for Long Range Forecast Multi-Model Ensemble indicates above normal rainfall across the country for August 2020. Most of individual models indicate normal-to-above normal rainfall in northern atolls and above normal rainfall in both central and southern atolls.

Probabilistic Multi-Model Ensemble of WMO Lead Centre for Long Range Forecast Multi-Model Ensemble indicates above normal Temperature across the country for August 2020. Except one, all individual models indicate above normal Temperature in all areas.

### Climate condition

Southwest monsoon (Hulhangu Moosun) continues over Maldives. Rainfall recorded in the period 1994-2019 in five stations show an increasing trend in rainfall during August.

On average, northern atolls receive relatively higher rainfall than rest of the country in this month.



Average Rainfall in August (1994-2019)  
Spatial distribution of rainfall over the country during

### Conclusion

By considering Multi-Model Ensemble of WMO Lead Centres, individual models, climate data, expected MJO and ENSO condition, and calibration of GCM output with station rainfall, above normal rainfall likely during August 2020.

Temperature likely above normal across the country during August 2020.

#### Note:

*Normal: Amount of rainfall between 90% - 110% of the average for the period.*

*Above normal: Amount of rainfall more than 110% of the average for the period.*

*Below Normal: Amount of rainfall less than 90% of the average for the period.*

#### References

Bureau of Meteorology, Australia. (2020, July 21). *Climate Model Summary for August to December 2020*. Retrieved from <http://www.bom.gov.au/climate/model-summary/#tabs=Indian-Ocean&region=NINO34>

Climate Prediction Center / NCEP. (2020, July 27). *ENSO: Recent evolution, current status and predictions*. Retrieved from [https://www.cpc.ncep.noaa.gov/products/analysis\\_monitoring/lanina/ens0\\_evolution-status-fcsts-web.pdf](https://www.cpc.ncep.noaa.gov/products/analysis_monitoring/lanina/ens0_evolution-status-fcsts-web.pdf)

Climate Prediction Center / NCEP. (2020, July 27). *Madden-Julian Oscillation: Recent evolution, current status and predictions*. Retrieved from [https://www.cpc.ncep.noaa.gov/products/precip/CWink/MJO/ARCHIVE/PDF/mjo\\_evol-status-fcsts-20200727.pdf](https://www.cpc.ncep.noaa.gov/products/precip/CWink/MJO/ARCHIVE/PDF/mjo_evol-status-fcsts-20200727.pdf)

National Oceanic and Atmospheric Administration. (2020, August). *Prob prate forecast*. Retrieved from [https://www.cpc.ncep.noaa.gov/products/NMME/prob/images/prob\\_ensemble\\_prate\\_lead1.png](https://www.cpc.ncep.noaa.gov/products/NMME/prob/images/prob_ensemble_prate_lead1.png)

National Oceanic and Atmospheric Administration. (2020, August). *Prob tmp2m forecast*. Retrieved from [https://www.cpc.ncep.noaa.gov/products/NMME/prob/images/prob\\_ensemble\\_tmp2m\\_lead1.png](https://www.cpc.ncep.noaa.gov/products/NMME/prob/images/prob_ensemble_tmp2m_lead1.png)